



EnSky Series Switches

EnSky Series Managed Gigabit Switches

Optimal Performance, Enterprise Features & Robust Management Options

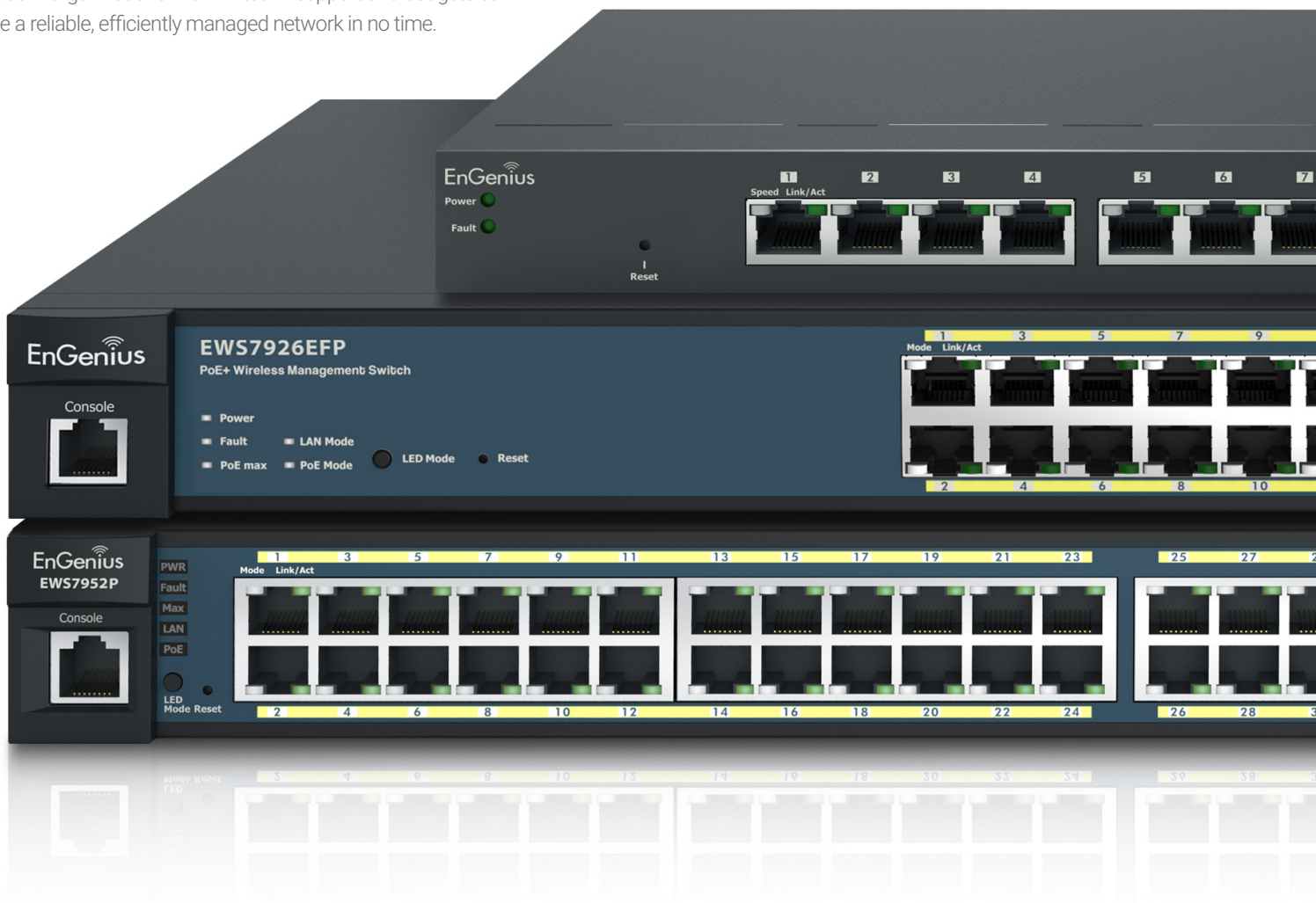
EnSky Series EWS Managed Gigabit Switches offer enterprise-class features, simplified network configuration, monitoring, and management options and optimal network performance for small to mid-size organizations.

Choose between 8-, 24-, and 48-Gigabit ports and Power-over-Ethernet (PoE+)-ready Layer 2 switches with 1-10 Gbps SFP+ ports. EWS Managed Switch model options also include desktop and rack mountable, fanless and SmartFan designs.

EWS Managed Gigabit Switches support easy deployment and operation. Organizations with limited IT support and budgets can create a reliable, efficiently managed network in no time.

Features & Benefits

- 10/100/1000 GbE Ports
- On-Board Network Management Tools
- 802.3at/af PoE+ Ready
- Network Troubleshooting, Monitoring & Email Alerts
- 1-10 Gbps SFP+ Slots Extend Connectivity via Fiber Uplinks, Redundancy & Failover
- Full-Featured Layer 2 Switching
- Topology View Displays Network Devices & Relationships
- Added Bonus: License-Free AP Management Built-In
- Added Bonus: License-Free Remote Management With ezMaster™

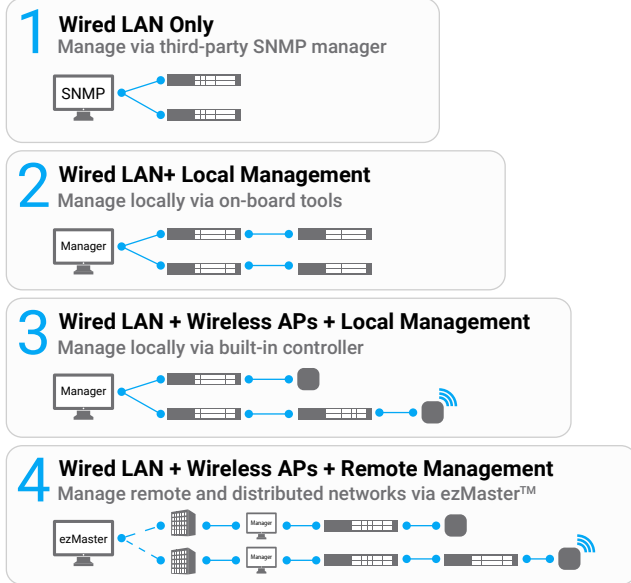


In-Switch Management

Simplified Network Management, Visibility & Troubleshooting

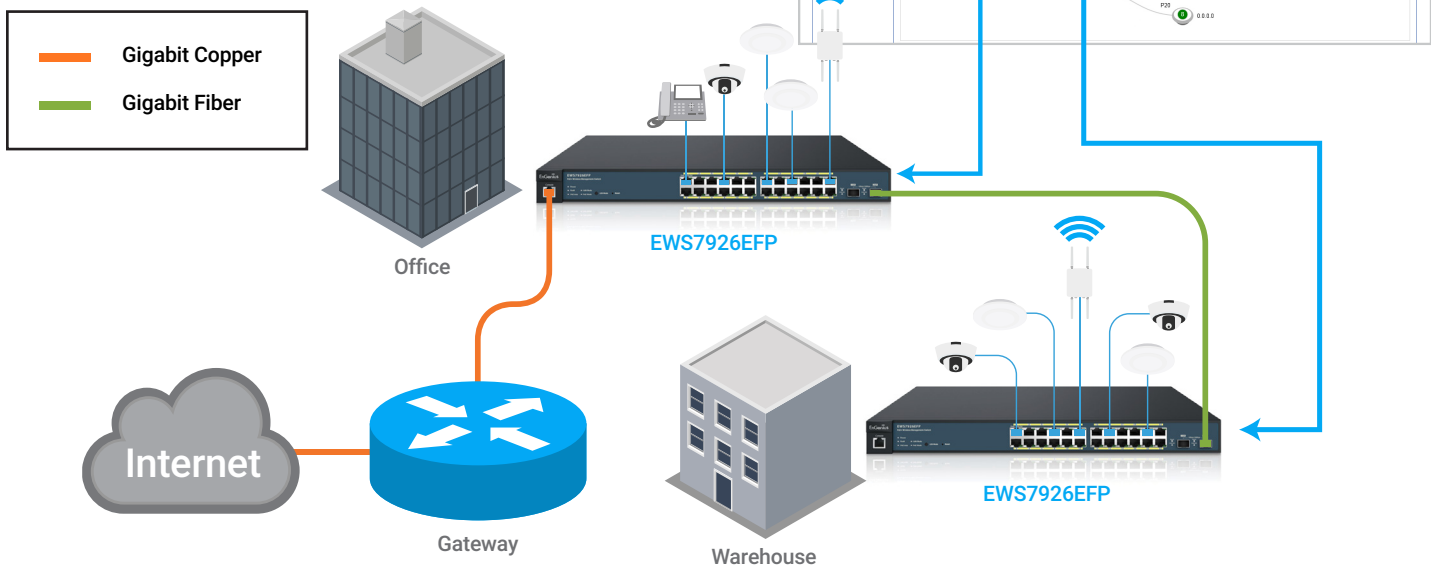
Achieve network management, visibility, and troubleshooting locally through the switch's on-board Web interface tools. Establish event-based email alerts for notification of predetermined activities.

Supports 4 Different Types of Management



In-Depth Network Visibility

Network Topology View automatically maps the network deployment to display device relationships across the infrastructure. Troubleshoot issues without manual tracking, and access the management interface of other EWS Switches directly from Topology View with QuickLink.



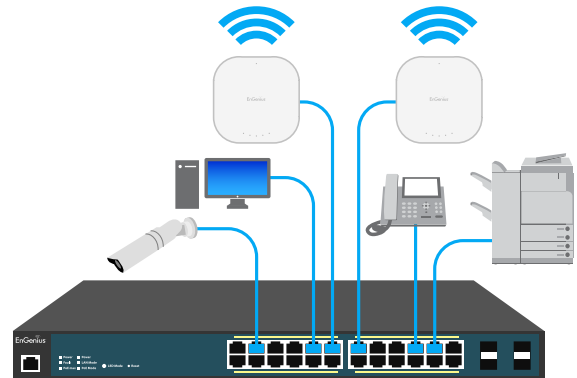
Full-Feature Layer 2 Gigabit Switching

High-Speed Gigabit

Provide reliable Gigabit access for networked devices and reduce delays that interrupt communications. The switch's 1 or 10 Gbps SFP+ slot options are suitable for connecting wired network segments throughout buildings that extend beyond the limitations of Ethernet cabling.

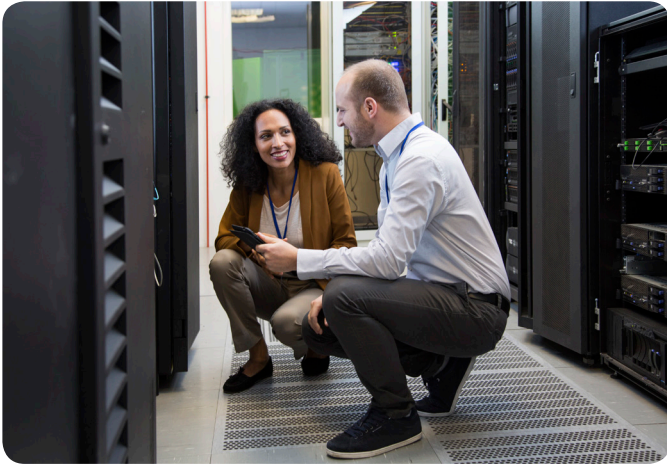
Power & Connect Multiple Devices

Optimize the installation and power management of network devices such as access points, IP cameras, and VoIP phones by providing 802.3at/af PoE+ power and data on all ports. Regulate power budgets according to device requirements and remotely power cycle individual ports.



Network Traffic Management

EnSky full-featured Layer 2 Switches offer performance-enhancing features that reduce multicasting traffic, speed up port blocking and port forwarding, and increase bandwidth via load balancing. Control each port's available bandwidth speeds for connected devices like APs in areas where more or less speed is needed, such as in lobbies or conference rooms.



VLAN/Voice & Quality of Service

Segment the network by departments or traffic types for increased performance and security with 802.1Q VLAN. While 802.1p Class of Service prioritizes compliant VoIP and video traffic ensuring bandwidth intensive, time-sensitive data is forwarded immediately for clear, smooth voice and video delivery.

Access Control & Security

Protect the network via 802.1X port-based client authentication and security through a RADIUS server. Utilizing Access Control Lists (ACLs), administrators can see who has access to network segments while screening traffic from unauthorized MAC or IP addresses. Establish a Guest VLAN to grant and limit Internet resources for visitors while keeping the network secure.

Network Monitoring & Troubleshooting

Enable 3rd party SNMP management and monitor the network's performance by viewing port statistics, system logs, and RMON data. Perform port diagnostics through Ping Tests, diagnose cable failure and trace the route data takes through the network to troubleshoot slowdowns or connection issues.

Added Bonus: License-Free Access Point & Remote Management

Locally Manage Network Devices With On-Board Tools

Quickly discover, configure and monitor network devices and manage up to 50 APs, Switches, or IP Cameras within the local subnet, license-free, through the switch's suite of wireless management features.

Centrally Manage Wired & Wireless Devices via ezMaster

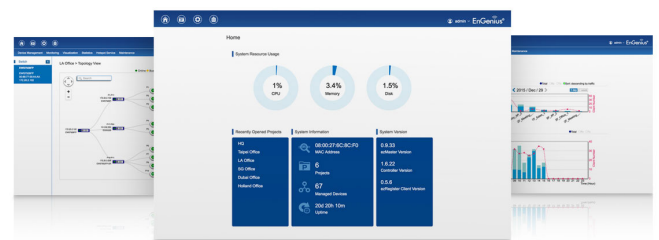
Manage Access Points, Switches, and IP Cameras through ezMaster Network Management Software for remote, centralized management of hundreds of devices across the network or multiple sites regardless of size or location without licensing or subscription fees.

Utilize ezWiFi Planner and upload your designed Wi-Fi floorplans into the switch's interface or ezMaster to show optimized Access Point placement.











Simplified Device Management

Centralized device management is easy through both the switch's on-board tools and ezMaster Software. Group devices for streamlined configuration, provisioning and monitoring; view wired and wireless traffic via a comprehensive at-a-glance dashboard and get rich analytics and reporting.



Managed Gigabit PoE+ Switches

								
Models	EWS7952FP	EWS7952P	EWS7926EFP	EWS1200-28TFP	EWS7928P	EWS5912FP	EWS2910P	EWS2908P
10/100/1000 Base-T, PoE+	48	48	24	24	24	8	8	8
10/100/1000/10000 SFP+ Ports	-	-	2	-	-	-	-	-
10/100/1000 SFP Ports	4	4	-	4	4	2	2	-
RJ45 Console Port	•	•	•	•	•	•	-	-
Auto Uplink Gigabit Ports	-	-	-	-	-	2	-	-
Rackmount	19" 1U	19" 1U	19" 1U	19" 1U	19" 1U	13" 1U	9.45" (desktop)	9.45" (desktop)
Total PoE Budget	740W	410W	410W	410W	185W	130W	55w	55W
PoE+ Capable Ports	1-48	1-48	1-24	1-24	1-24	1-8	1-8 (802.3af only)	1-8 (802.3af only)
Switching Capacity	104 Gbps	104 Gbps	88Gbps	56 Gbps	56 Gbps	24 Gbps	20 Gbps	16Gbp
Forwarding Mode	Store-and-forward	Store-and-forward	Store-and-forward	Store-and-forward	Store-and-forward	Store-and-forward	Store-and-forward	Store-and-forward
MAC Address Table	8k	8k	8k	8k	8k	8k	8k	8k
Packet Buffer Memory	1.5 MB	1.5 MB	1.5MB	512 KB	512 KB	512 KB	512 KB	512 KB
Power Source	100 to 240 VAC 50/60Hz	100 to 240 VAC 50/60Hz	100 to 240 VAC 50/60Hz	100 to 240 VAC 50/60Hz	100 to 240 VAC 50/60Hz	100 to 240 VAC 50/60Hz	100 to 240 VAC 50/60Hz	100 to 240 VAC 50/60Hz
Full Load Power Consumption	857.83 Watts	509.44 Watts	511.8 Watts	440.78 Watts	228.10 Watts	228.10 Watts	63.18 Watts	63.18 Watts
Management	Wireless AP Controller, ezMaster Network Management Software, Web GUI, CLI, SNMP, RMON, HTTPS, Dual Image							
Wireless EWS AP Support	Up to 50	Up to 50	Up to 50	Up to 50	Up to 50	Up to 50	Up to 50	Up to 50
Advanced QoS with IPv4/IPv6 Multicast Filtering	IGMP and MLD Snooping							
Auto-VoIP	•	•	•	•	•	•	•	•
VLANs	Max 4094 Static Groups, Voice VLAN							
Network Standards	IEEE 802.3 Ethernet IEEE 802.3i 10Base-T Ethernet IEEE 802.3u 100Base-TX Fast Ethernet IEEE 802.3ab 1000Base-T Gigabit Ethernet IEEE 802.3x Full-Duplex Flow Control IEEE 802.3z Gigabit Ethernet 1000Base-SX/LX IEEE 802.3ad Link Aggregation (Trunking) IEEE 802.1D Spanning Tree Protocol (STP) IEEE 802.1w Rapid Spanning Tree Protocol (RSTP) IEEE 802.1s Multiple Spanning Tree Protocol (MSTP) IEEE 802.1Q VLAN Tagging IEEE 802.1ab Link Layer Discovery Protocol (LLDP) IEEE 802.1p Quality of Service IEEE 802.1X RADIUS Access Control IEEE 802.3az Energy Efficient Ethernet							

Technical Specifications

Network Ports

EWS2908P

8 x 10/100/1000 Mbps Ports

EWS2910P

8 x 10/100/1000 Mbps Ports

2 x 100/1000 Mbps SFP Slot

EWS5912FP

8 x 10/100/1000 Mbps Ports

2 x 100/1000 Mbps SFP Slot

2 x 100/1000 Mbps Uplink

1 x RJ45 Console Port

EWS7928P/EWS1200-28TFP/EWS7926EFP

24 x 10/100/1000 Mbps Ports

2 x 10/100/1000/10000 SFP+ Slot (EWS7926EFP only)

4 x 100/1000 Mbps SFP Slot (EWS7928P/EWS1200-28TFP only)

1 x RJ45 Console Port

EWS7952FP/EWS7952P

48 x 10/100/1000 Mbps Ports

4 x 100/1000 Mbps SFP Slot

1 x RJ45 Console Port

Switching Capacity

EWS2910P/ EWS2908P: 20 Gbps

EWS5912FP: 24 Gbps

EWS7928P/EWS1200-28TFP/EWS7926EFP: 56 Gbps

EWS7952FP/EWS7952P: 104 Gbps

Forwarding Mode

Store and Forward

SDRAM

256 MB

Flash Memory

32 MB

EWS1200-28TFP/EWS7952P/EWS5912FP/ EWS2910P/EWS2908P

Packet Buffer Memory: 512 KB

EWS7952FP/EWS7952P

Packet Buffer Memory: 1.5 MB

PoE Capable Ports

EWS2910P/ EWS2908P

PoE Standard: Ports 1~8 Support IEEE 802.3af

EWS5912FP

PoE Standard: Ports 1~8 Support IEEE 802.3at/af

EWS7928P/EWS1200-28TFP/EWS7926EFP

PoE Standard: Ports 1~24 Support IEEE 802.3at/af

EWS7952FP/EWS7952P

PoE Standard: Ports 1~48 Support IEEE802.3at/af

PoE Output

EWS2910P/ EWS2908P Ports 1~8 Output Up to 15.4W

EWS5912FP Ports 1~8 Output Up to 30W

EWS7928P All Gigabit Ethernet Ports Up to 30W

EWS1200-28TFP/EWS7926EFP All Gigabit Ethernet Ports Up to 30W

EWS7952FP/EWS7952P All Gigabit Ethernet Ports Up to 30W

Total PoE Budget

EWS2908P: 55 W

EWS2910P: 61.6W

EWS5912FP: 130W

EWS7928P: 185W

EWS1200-28TFP/EWS7926EFP: 410W

EWS7952P: 410W

EWS7952FP: 740W

Power & Source

EWS7952FP

Full Load Power Consumption: 885.23 Watts

110 to 240 VAC 50/60Hz

EWS7952P

Full Load Power Consumption: 509 Watts

110 to 240 VAC 50/60Hz

EWS1200-28TFP/EWS7926EFP

Full Load Power Consumption: 409.74 Watts

110 to 240 VAC 50/60Hz

EWS7928P

Full Load Power Consumption: 235.3 Watts

110 to 240 VAC 50/60Hz

EWS5912FP

Full Load Power Consumption: 152.8 Watts

110 to 240 VAC 50/60Hz

EWS2910P/EWS2908P

Full Load Power Consumption: 79.4 Watts

110 to 240 VAC 50/60Hz

LED Indicators

1 x Power LED

1 x Fault LED

1 x PoE Max LED

1 x LAN Mode LED

1 x PoE Mode LED

Copper Ports: LAN/PoE Mode, Link/Act

SFP Ports: Link/Act, Speed (EWS2910P, EWS7952FP, EWS7926EFP only)

Software Features / Layer 2 Features

802.3ad Link Aggregation

- Maximum of 8 Groups/8 Ports per Group

Port Mirroring

- One-to-One

- Many-to-One

Spanning Tree Protocol

- 802.1D Spanning Tree Protocol (STP)

- 802.1w Rapid Spanning Tree Protocol (RSTP)

- 802.1s Multiple Spanning Tree Protocol (MSTP)

MAC Address Table

- 8K Entries

Static MAC Address

- 256 Entries

802.1ab Link Layer Discovery Protocol

IGMP Snooping

- IGMP v1/v2/v3 Snooping

- Supports 4094 IGMP Groups

- IGMP per VLAN

- IGMP Snooping Querier

- IGMP Snooping Fast Leave

MLD Snooping

- MDL Snooping v1/v2

- Supports 4,094 MLD Groups

- MLD per VLAN

Jumbo Frame

- Up to 9,216 bytes

802.3x Flow Control

802.3az Energy Efficient Ethernet

VLAN

802.1Q Support

VLAN Group

- Max 4,094 Static VLAN Groups

Voice VLAN

Technical Specifications continued

QoS

802.1p Quality of Service
- 8 Queues per Port
Queue Handling
- Strict
- Weighted Round Robin (WRR)
QoS Based on:
- 802.1p Priority
- DSCP
Bandwidth Control
- Port-Based (Ingress/Egress, 64 Kbps~1000 Mbps)
Broadcast/Unknown Multicast/Unknown Unicast Storm Control

Access Control List (ACL)

Layer 2
- Supports Maximum 32 Entries (ACL)
- Supports Maximum 256 Entries (ACE)
ACL Based on:
- MAC Address
- VLAN ID
- 802.1p Priority
- Ethertype
- IP Address
- Protocol Type
- DSCP

Security

802.1X
- Guest VLAN
- Port-Based Access Control
Supports RADIUS Authentication
Port Security
- Up to 256 MAC Addresses per Port
Port Isolation
DoS Attack Prevention
BPDU Attack Prevention

Monitoring

Port Statistics
System Log
RMON

Management

Web Graphical User Interface (GUI)
Command Line Interface (CLI)
BootP/DHCP Client/DHCPv6 Client
SSH Server
Telnet Server
TFTP Client
HTTPS
SNMP

Management continued

Web Graphical User Interface (GUI)
Command Line Interface (CLI)
BootP/DHCP Client/DHCPv6 Client
SSH Server
Telnet Server
TFTP Client
HTTPS
SNMP
- Supports v1/v2c/v3
SNMP Trap
SNTP
Configuration Restore/Backup
Dual Images
Email Alerts

PoE Management

Power On/Off Per Port
Power Class Configuration
Power Feeding with Priority
User Defined Power Limit

Diagnostic

Cable Diagnostic
Ping Test
Trace Route
IPv6 Ping Test

MIB/RFC Standards

RFC1213
RFC1493
RFC1757
RFC2674
RFC 2863

Wireless Management Features (with EnSky Series Access Points & ezMaster)

AP Supported (up to 50 APs in controller mode)
Access Point Auto Discovery & Provisioning
Access Point Auto IP-Assignment
Access Point Group Management
Remote Access Point Rebooting
Access Point Device Name Editing
Access Point Radio Settings
Band Steering
Traffic Shaping
Fast Roaming (802.11k & 802.11r)
Pre-Authentication (802.11i & 802.11x)
PMK Caching (802.11i)
RSSI Threshold
Access Point Client Limiting
Client Fingerprinting
Wireless Security (WEP, WPA/WPA2 Enterprise, WPA/WPA2 PSK)

Wireless Management Features (with EnSky Series Access Points & ezMaster) continued

AP VLAN Management
VLANs for Access Point- Multiple SSIDs
Secured Guest Network
Capture Portal
Access Point Status Monitoring
Rogue AP Detection
Email Alert
Wireless Client Monitoring
Background Scanning
Wireless Traffic & Usage Statistics
Real-Time Throughput Monitoring
Visual Topology View
Floor Plan View
Map View
Wireless Coverage Display
Secure Control Messaging (SSL Certificate)
Local MAC Address Database
Remote MAC Address Database (RADIUS)
Unified Configuration Import/Export
Intelligent Diagnostics
Bulk Firmware Upgrade Capability
One-Click Update
Kick/Ban Clients
Wi-Fi Scheduler

Technical Specifications continued

Environmental & Mechanical
Temperature Range

EWS2910P/EWS2908P

Operating: 32°F to 104°F (0°C to 40°C)

Storage Temperature: -40°F to 158°F (-40°C to 70°C)

EWS5912FP/EWS7928P/EWS1200-28TFP/
EWS7926EFP/EWS7952FP/EWS7952P

Operating: 32°F to 122°F (0°C to 50°C)

Storage Temperature: -40°F to 158°F (-40°C to 70°C)

Humidity (non-condensing)

Operating: 5% - 95%

Device Dimensions & Weights

EWS2910P/EWS2908P

Weight: 1.36 lbs. (620 g)

Width: 9.45" (240 mm)

Length: 4.13" (105 mm)

Height: 1.06" (27 mm)

EWS5912FP

Weight: 4.4 lbs. (1.9 kg)

Width: 13.00" (330.20 mm)

Length: 9" (228.60 mm)

Height: 1.73" (43.94 mm)

EWS7928P

Weight: 7.82 lbs. (3.5 kg)

Width: 17.3" (439 mm)

Length: 10.24" (260 mm)

Height: 1.73" (44 mm)

Device Dimensions & Weights continued

EWS1200-28TFP/EWS7926EFP

Weight: 7.82 lbs. (3.5 kg)

Width: 17.3" (439 mm)

Length: 10.24" (260 mm)

Height: 1.73" (44 mm)

EWS7952P

Weight: 12.3 lbs. (5.6 kg)

Width: 17.32" (440 mm)

Length: 10.23" (260 mm)

Height: 1.73" (44 mm)

EWS7952FP

Weight: 14.15 lbs. (6.4 kg)

Width: 17.32" (439.9 mm)

Length: 16.14" (409.9 mm)

Height: 1.73" (43.9 mm)

Package Contents

1x EWS Managed Gigabit Switch

1x Quick Installation Guide

EWS2910P/EWS2908P

1x Power Adapter

1x Power Cord

1x Wall Mount Kit

1x Ground Screw Set

EWS5912FP/EWS7928P/EWS7926EFP/
EWS7952FP/EWS7952P

1x Power Cord

1x RJ45 Console Cable

1x Rack Mount Kit

Certifications

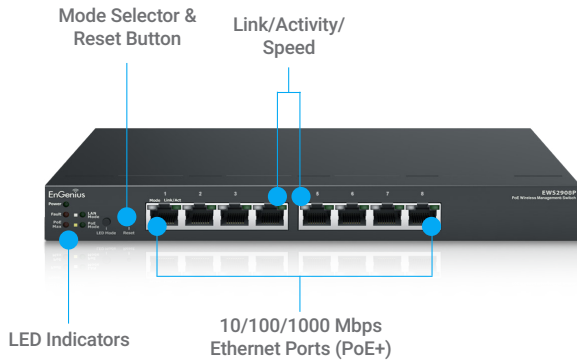
CE, FCC, IC

Warranty

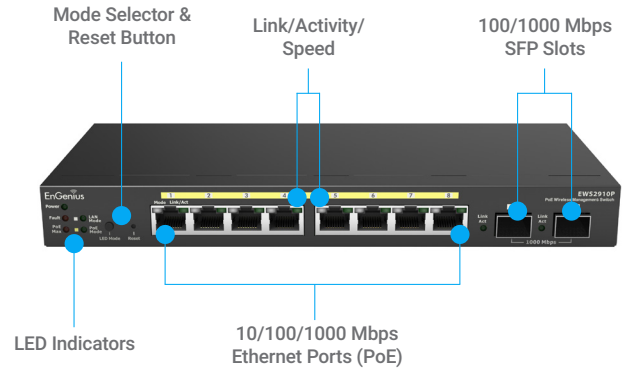
1 Year

Desktop

EWS2908P

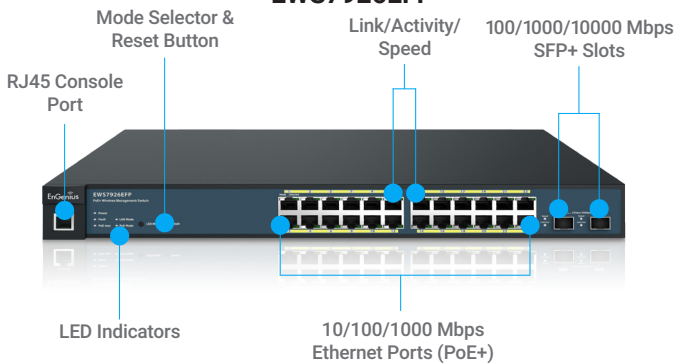


EWS2910P

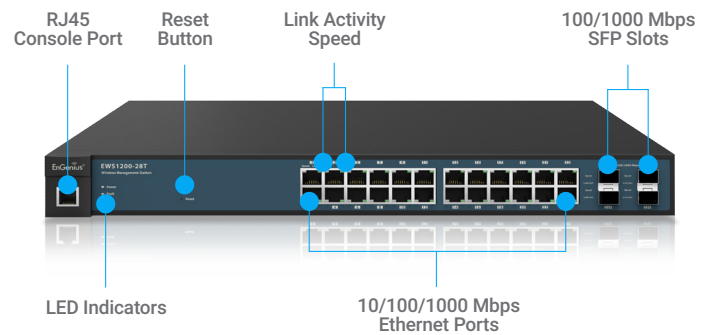


Rackmount

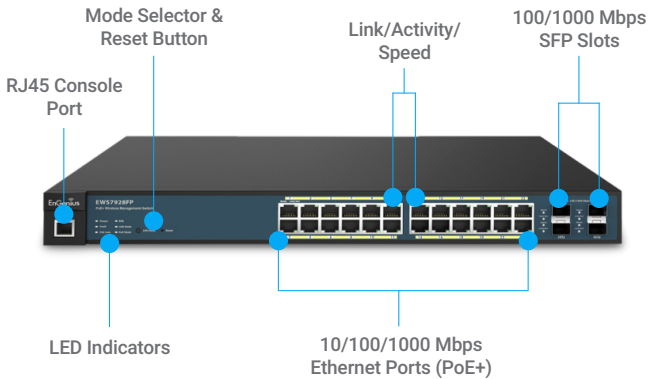
EWS7926EFP



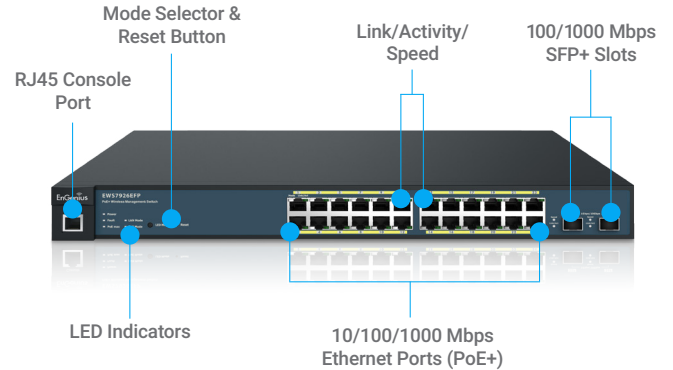
EWS7952FP/EWS7952P



EWS1200-28TFP



EWS7928P



EWS5912FP

