

# Alcatel-Lucent OmniVista Cirrus

Simple, secure cloud-based  
network management as a service

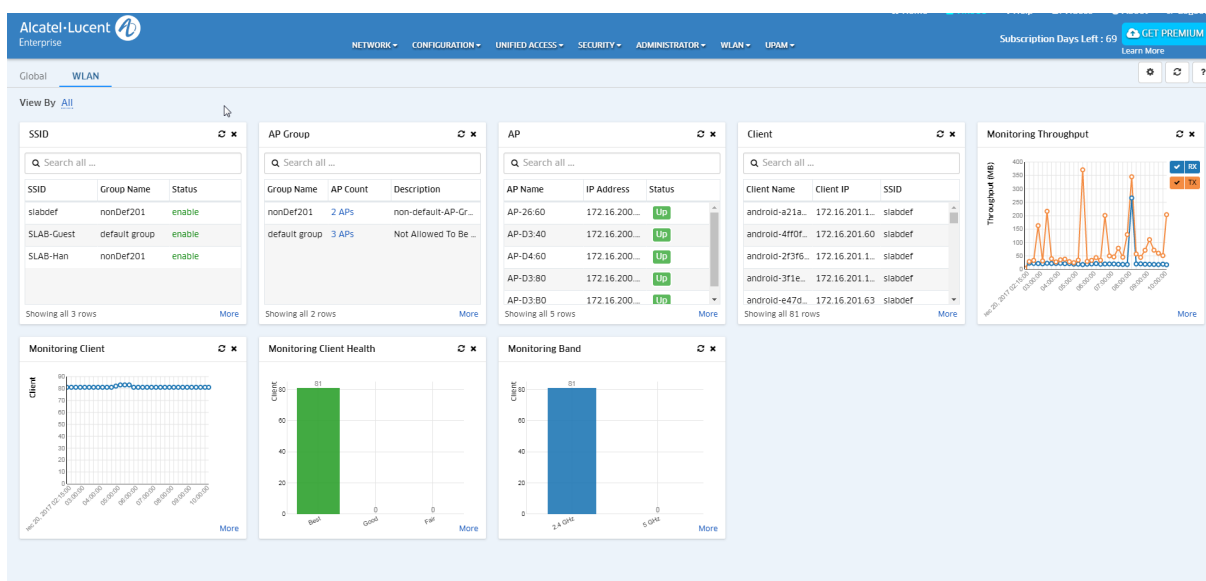
[Alcatel-Lucent OmniVista® Cirrus](#) is a scalable, resilient, secure cloud-based network management for unified access offered as a subscription service. OmniVista Cirrus offers an easy to deploy, effective way to manage and monitor Alcatel-Lucent Enterprise switches and Alcatel-Lucent OmniAccess® Stellar access point infrastructure. It provides advanced policy capabilities for guest access and BYOD as well as advanced analytics for smarter decision making.

OmniVista Cirrus is a subscription-based service, facilitating alignment with your new business imperatives. Ease of purchasing, provisioning and ongoing daily operations are at the core of OmniVista Cirrus. This facilitates your digital transformation, allowing you to be quick to respond to new business needs such as IoT total enablement solution and identification of network connected devices, but without high upfront costs or complex infrastructure changes or software deployments. Shifting to a cloud based network management solution with OmniVista Cirrus simplifies digital transformation by reducing cost and administrative IT burden.

OmniVista Cirrus sets a new IT experience standard for simple yet powerful capabilities. OmniVista Cirrus can scale and adapt to your business requirements. It offers advanced visibility and control over users and applications. By focusing on core IT operations OmniVista Cirrus comprehensive management solution makes it easy to improve application performance and troubleshoot issues in deployments with distributed locations and limited IT staff. OmniVista Cirrus protects your network infrastructure investment by adapting to changing business needs without expensive “rip and replace.”

Features	Benefits
Investment protection	<ul style="list-style-type: none"> <li>• Migrate Alcatel-Lucent Enterprise Wireless and wired devices from on-premises deployment to OmniVista Cirrus with minimal effort</li> <li>• Quickly adapt your network infrastructure to meet the changing needs of your business without costly hardware replacement or complex network re-architecture for maximum business alignment</li> </ul>
Operational simplification	<ul style="list-style-type: none"> <li>• Continuous feature updates delivered from the cloud, reducing IT daily involvement and costs</li> <li>• Intuitive interface eliminating costly training or added staff</li> </ul>
Multi-site management	<ul style="list-style-type: none"> <li>• Provides centralized management of multiple virtual or physical sites</li> <li>• Consolidates critical management information from across the entire network for a global and consistent network experience</li> </ul>
Multi-tenancy services	<ul style="list-style-type: none"> <li>• Multi-client level with simplified network administration</li> <li>• Easily control who has access to which client network and tenant with the appropriate administrative network administration credentials</li> <li>• See all key management status and all-important network events and alerts from a single Dashboard</li> </ul>
Highly scalable	<ul style="list-style-type: none"> <li>• Cloud elasticity to support small to large cloud scalability from small to large network deployments without network reconfiguration</li> <li>• Designed to scale and adapt to your business transformation imperatives during subscription</li> </ul>
Highly available	<ul style="list-style-type: none"> <li>• Hosted in multiple regional data centers with optimal 99.99% availability</li> <li>• Maximum availability ensured with backup and redundant services and disaster recovery provided by each data center</li> </ul>
Highly secure	<ul style="list-style-type: none"> <li>• OmniVista Cirrus with separation of out of band control plane (management traffic) and user data</li> <li>• Secure communications with the highest level of protection using certificates ranging from a mutual cloud to device authentication</li> </ul>
Easy to deploy	<ul style="list-style-type: none"> <li>• Simplified device catalog and cloud on-boarding with OmniVista Assistant apps (iOS and Android)</li> <li>• Faster service roll-out with Zero-touch provisioning of managed network devices</li> <li>• Minimal network expertise required for initial enterprise network set up and daily operations, offloading IT resource</li> </ul>
Auto-Provisioning	<ul style="list-style-type: none"> <li>• Automates roll-out of consistent device configuration and translates into deployment of specific device configuration based on adapted network services</li> <li>• Allows off-the shelf OmniSwitches to be provisioned simply by connecting to the network</li> <li>• Policy-driven provisioning and automation allowing compliance enforcement for provisioning best practices</li> <li>• Lower costs by enabling deployment of new devices in minutes, and without onsite support visits, eliminates repetitive tasks and onsite support visits</li> </ul>
IoT enablement	<ul style="list-style-type: none"> <li>• Know your network with a single pane of glass for Inventory view- from traditional IT managed devices up to hard to detect endpoints</li> <li>• Real-time wired-wireless endpoints inventory with Cloud based device fingerprinting solution for most diversified network environments with advanced contextual information</li> <li>• IoT focus dashboard widgets facilitate the operational management for faster time to decision</li> <li>• IoT Policy Enforcement with access role profiles automates network-wide access based on IoT classification</li> </ul>
Device Lifecycle management	<ul style="list-style-type: none"> <li>• Optimal device firmware selection with remote update over the cloud for network element under subscription</li> </ul>
Easy wireless configuration with integrated Guest access and BYOD support	<ul style="list-style-type: none"> <li>• Reduced administration time and effort while providing consistent network experience across LAN and WLAN services</li> <li>• Extensive guest access and BYOD support for on-boarding and management of visitor and employee personal devices</li> <li>• Fully customizable Captive Portal with integrated credentials management for email, sms, social Login (Facebook, Google, WeChat)</li> </ul>
Application visibility and control	<ul style="list-style-type: none"> <li>• Ensure consistent user experience to support all business requirements across the network infrastructure</li> <li>• Control usage on the network of recreational applications</li> <li>• Optimized network application performances for professional applications and network services</li> </ul>
Network Health Monitoring	<ul style="list-style-type: none"> <li>• Network Operating Center (NOC) style topology provides global visibility of all network equipment in a single view with real-time view of devices, clients, alarms and events</li> <li>• Real-time monitoring and analysis of critical network performance indicators through visual widgets</li> </ul>

## OmniVista Cirrus dashboard



OmniVista Cirrus Dashboard offers Real-time monitoring and analysis of critical network performance indicators through intuitive visual widgets.

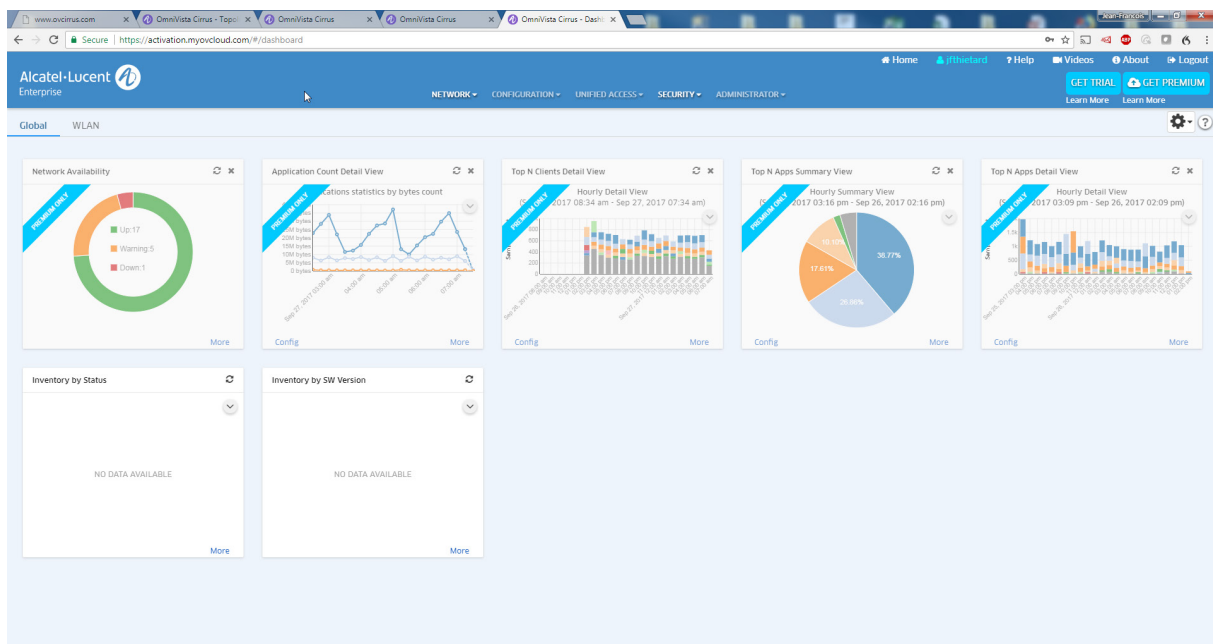
## OmniVista Cirrus device on-boarding

The device catalog displays a list of devices with the following columns:

Serial Number	Model	Current Software Vers...	Desired Software Vers...	Device Status	Device Category	Device Name	IP Address	Operational Status
771232X18060	056900-C32	Unknown	Do not upgrade	Waiting for First Contact	LAN Core			
A116078462	056900-V72	Unknown	Do not upgrade	Waiting for First Contact	LAN Core			
T4020038	059900	8.5.19.R04	Do not upgrade	Unsupported Device Model	Unknown			
T0583817	056860E-P24	8.5.16.801	Do not upgrade	Pre-Provisioning Failed	LAN Advanced			
V148178P	056560-P24224	8.5.55.R04	Do not upgrade	TV Managed	LAN Essential	HAN-Bldg-C-6560	192.168.100.235	Warning
R148029P	056860E-P24	8.5.108.R04	Do not upgrade	TV Managed	LAN Advanced	HAN-Core	10.255.214.51	Up
SS2171100114	0A1W-AP1222	3.0.5.30	3.0.5.30	TV Managed	Stellar AP	AP-113_03.20	172.16.115.115	Down
SS2171100128	0A1W-AP1222	3.0.5.30	3.0.5.30	TV Managed	Stellar AP	AP-130_04.00	172.16.125.118	Up
SS2183200644	0A1W-AP1201	3.0.5.30	3.0.5.30	TV Managed	Stellar AP	AP-134_27.20.1201	172.16.200.110	Up
SS2173200084	0A1W-AP1231	3.0.5.30	3.0.5.30	TV Managed	Stellar AP	AP-243_32.00	172.16.135.108	Up
U498083P	056860E-P2428	8.5.108.R04	Do not upgrade	TV Managed	LAN Advanced	HAN-Bldg-A-P2428	172.16.0.84	Up
P498062P	056860E-24	8.5.108.R04	Do not upgrade	TV Managed	LAN Advanced	HOV-1.1	1.1.0.251	Warning
V4781650	056900-P24224	8.5.55.R04	Do not upgrade	TV Managed	LAN Essential	HAN-Bldg-C-6560	192.168.100.235	Warning
P1285641	056450-P48	6.7.2.113.R05	Do not upgrade	TV Managed	LAN Essential	Bldg-A-DVC_64	172.16.0.81	Up
U4080210	056860E-24	8.5.108.R04	Do not upgrade	TV Managed	LAN Advanced	CTTS0	172.20.1.72	Warning
R338006P	056450-P105	6.7.2.113.R05	6.7.2.113.R05	TV Managed	LAN Essential	P105-70	172.16.0.82	Up
U498103P	056860E-P2428	8.5.108.R04	Do not upgrade	TV Managed	LAN Advanced	HOV-1.2	1.1.0.252	Up
SS2182000069	0A1W-AP1201H	3.0.5.30	3.0.5.30	TV Managed	Stellar AP	AP-135_28E0	172.16.135.115	Up
SS2182600147	0A1W-AP1201H	3.0.5.30	3.0.5.30	TV Managed	Stellar AP	AP-245_30.40.1201H	172.16.125.131	Up
V528058P	056465-P12	8.5.55.R04	Do not upgrade	TV Managed	LAN Essential	056465	172.16.0.85	Up
U408023P	056860E-P48	8.5.108.R04	Do not upgrade	TV Managed	LAN Advanced	HAN-Core	10.255.214.51	Up
P418017P	056860E-P48	8.5.108.R04	Do not upgrade	TV Managed	LAN Advanced	HAN-Bldg-B-6560E-P48	172.16.0.83	Up

Easy, intuitive registration and activation for Alcatel-Lucent Enterprise portfolio from OmniVista Cirrus device catalog.

## OmniVista Cirrus Freemium



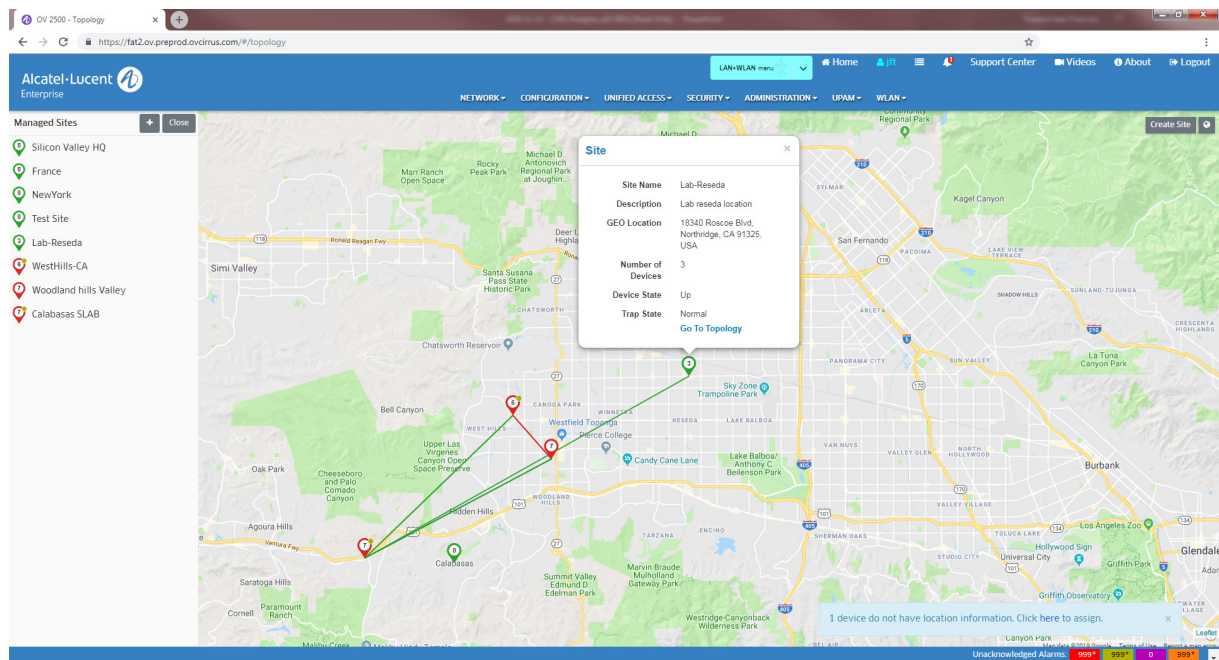
OmniVista Cirrus Freemium mode allows Alcatel-Lucent Enterprise customers easy access to the latest software and firmware versions for their network devices.

## OmniVista Cirrus Template Based Provisioning

Serial Number/MAC	Switch Model	Provisioning Status	Switch Config Template	Value Mapping	Mgmt Users Template	Devices	Last Updated Time	Save and Certify
R338015P	OS6450-P105	Matched		No Value Mapping	default	SW72-P105 (172.16.0.74)	Sep 11, 2019 1:38:59 PM	Yes
R148029P		Set up		No Value Mapping	default		Sep 17, 2019 11:29:22 AM	Yes
U408023P		Set up		No Value Mapping	default		Sep 17, 2019 11:27:26 AM	Yes
U498083P		Matched		No Value Mapping	snmpRwMonDef	HAN-Bldg-A-P242	Sep 18, 2019 11:45:58 AM	Yes
R338006P		Matched	extravlan	No Value Mapping	snmpRwMonDef	OS64-P105-70 (172.16.0.74)	Sep 19, 2019 6:03:52 PM	Yes
V4781650		Set up		No Value Mapping	snmpRwMonDef		Oct 4, 2019 6:47:28 PM	Yes
A13000019		No Match		No Value Mapping	default		Oct 4, 2019 1:39:32 PM	Yes
U4080210		Matched		No Value Mapping	default	GTT50 (172.20.1.7)	Oct 4, 2019 1:39:32 PM	Yes
P1285641		No Match		No Value Mapping	default		Oct 4, 2019 1:40:47 PM	Yes
P418012P		No Match		No Value Mapping	default		Oct 4, 2019 1:41:24 PM	Yes
V4480694		No Match		No Value Mapping	default		Oct 4, 2019 1:42:13 PM	Yes

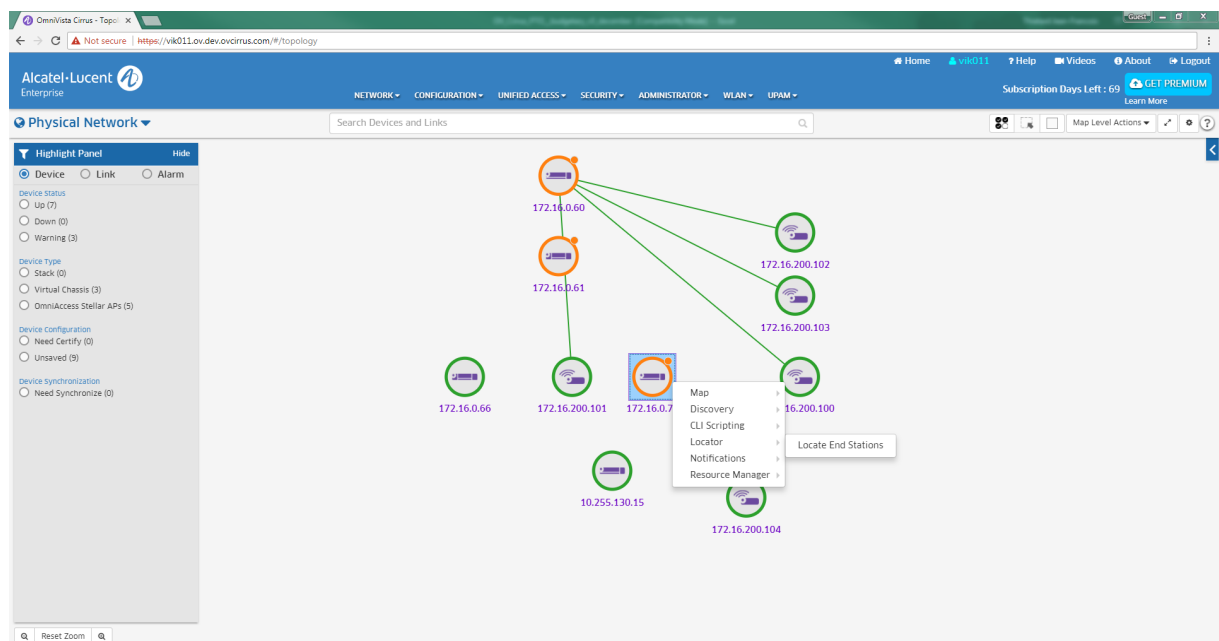
Policy-driven provisioning and automation reduce cost of new device deployment.

## Geo-Location Topology



Geo-location node map shows nodes and device status in geographical context using Google map

## OmniVista Cirrus Network Topology



OmniVista Cirrus real-time detailed topology for each tenant across multi-site deployment.

## IoT Inventory

Endpoint MAC	Endpoint IP	Status	UNP	Category	VLAN/Tunnel	Port/ESSID	End Time	Manufacturer	Switch/AP Name
18:69:42:9e:08:44	172.16.121.110	Active	unpCommonFAT31	Operating System	0	SLAB-IOT-FAT31		Android OS	AP-245_3D-40 (172.16.121)
78:10:02:4f:a5:03	0.0.0.0	Error			0	SLAB-IOT-simple-FAT31			AP-245_3D-40 (172.16.121)
64:40:3e:1b:1f:34	172.16.131.85	Active	unpFAT31IoTCommon	Operating System	131	SLAB-IOT-simple-FAT31		Android OS	AP-261_05-30 (172.16.131)
00:87:24:1a:00:3d	172.16.122.86	Active	unpCommonFAT31	Audio, Imaging or Video Equipment	0	SLAB-IOT-FAT31		Vizio TV	AP-245_3D-40 (172.16.121)
0c:18:01:19:3f:06	172.16.122.104	Active	unpCommonFAT31	Operating System	0	SLAB-IOT-FAT31		Android OS	AP-245_3D-40 (172.16.121)
80:cc:2b:bca:75	172.16.131.103	Active	unp8021xCommon	Operating System	131	SLAB-8021x-FAT31		Murata Manufactu...	AP-261_05-30 (172.16.131)
68:40:65:37:8f:5f	172.16.131.88	Active	unpFAT31IoTCommon	Operating System	131	SLAB-IOT-simple-FAT31		Android OS	AP-261_05-30 (172.16.131)
78:61:03:24:97:49	0.0.0.0	Error		AmazonCustomCategory	0	SLAB-IOT-simple-FAT31		Amazon Technolog...	AP-245_3D-40 (172.16.121)
70:a8:55:9e:00:ad	172.16.121.102	Active	unpFAT31IoTCommon	Operating System	0	SLAB-IOT-simple-FAT31		Android OS	AP-239_38-70 (172.16.207)
38:22:14:01:09:82	172.16.121.96	Active	unpFAT31IoTCommon	Operating System	131	SLAB-IOT-simple-FAT31		Android OS	AP-261_05-30 (172.16.131)
24:26:ea:ee:0a:59	172.16.131.96	Active	unpFAT31IoTCommon	Operating System	131	SLAB-IOT-simple-FAT31		Android OS	AP-261_05-30 (172.16.131)
4c:ef:c0:cc:42:33	172.16.131.83	Active	unpFAT31IoTCommon	AmazonCustomCategory	131	SLAB-IOT-simple-FAT31		Amazon Technolog...	AP-261_05-30 (172.16.131)
34:80:8b:04:a1:8e	172.16.122.95	Active	unpCommonFAT31	Operating System	0	SLAB-IOT-FAT31		Android OS	AP-245_3D-40 (172.16.121)
50:dc:e7:55:3e:7c	172.16.131.81	Active	unpFAT31IoTCommon	AmazonCustomCategory	131	SLAB-IOT-simple-FAT31		Amazon Technolog...	AP-261_05-30 (172.16.121)
c0:65:39:15:2d:d3	172.16.121.72	Offline	unpCommonFAT31	Operating System	0	SLAB-IOT-FAT31	Monday, September 30, 20...	Android OS	AP-245_3D-40 (172.16.121)
68:82:96:22:45:91	172.16.121.116	Active	unpCommonFAT31	Operating System	0	SLAB-IOT-FAT31		Android OS	AP-245_3D-40 (172.16.121)
08:34:64:3d:0e:d9	172.16.122.108	Offline	unpFAT31IoTCommon	Operating System	0	SLAB-IOT-simple-FAT31	Monday, September 30, 20...	Android OS	AP-245_3D-40 (172.16.121)
0c:38:64:78:62:17	172.16.122.103	Offline	unpCommonFAT31	Operating System	0	SLAB-IOT-FAT31	Monday, September 30, 20...	Android OS	AP-245_3D-40 (172.16.121)
40:61:c2:15:09:3c	172.16.131.87	Active	unpFAT31IoTCommon	Operating System	131	SLAB-IOT-simple-FAT31		Android OS	AP-261_05-30 (172.16.131)
4c7c:14:48:47	172.16.121.96	Offline	unpCommonFAT31	Operating System	0	SLAB-IOT-FAT31	Monday, September 30, 20...	Android OS	AP-245_3D-40 (172.16.121)
08:63:11:29:7e:0f	172.16.121.91	Offline	unpFAT31IoTCommon	Operating System	0	SLAB-IOT-simple-FAT31	Monday, September 30, 20...	Android OS	AP-245_3D-40 (172.16.121)

Single Pane of glass for IoT endpoints inventory view

## Product specifications

### Simplified ordering and activation

- Portal for customer self- registration and subscription activation
- Pay-as-you-go subscription model with flexible duration (1, 3, 5 years) to accommodate business OPEX imperatives
- Flexible Service and Support bundle for device under subscription
- Easy subscription renewal process to avoid service interruption

### Simplified deployment

- Network devices automatically connect to OmniVista Cirrus out of the box
- Optimal firmware update for device cloud registration
- Configuration template for devices and Access Points for auto-provisioning
- Template for devices and access points bulk provisioning and configuration modeling

### Secure

- Internet traffic limited to encrypted Management data
- Layer 2 VPN IPsec encryption and tunneling services between a network device and OmniVista Cirrus

- Administrative management is secured over HTTPS/SSL with different levels of administration
- Role-based administration for mapping network administration credentials to a specific subset of customer organization
- Firewall friendly, eliminating complex local infrastructure changes
- Strong password policy

### Multi-tenancy services

- Allow Managed Service Providers (MSP) and large organizations to effectively manage and monitor multiple associated customers
- User management control for easy control and devices access with role based access profiles
- Advanced Dashboard capabilities for Multi-Tenancy Services including devices inventory, alerts and devices status

### Geo-location topology

- Google map integration by displaying devices or network sites by its physical location address or by its GPS coordinates
- Register automatically device GPS coordinates, through OV Cirrus Mobile Assistant application (iOS and Android)

- Display device list, equipment status associated to a geographical site

### Network topology

- Detailed discovery of the Alcatel-Lucent Enterprise portfolio with overlay display for wired/ wireless devices and virtual chassis
- Network visualization for logical and physical infrastructure and live device status
- Dynamic, customizable, logical map based on user-defined filters (IP subnet, location, model, user provided descriptive info)
- Hierarchical multi-site topology display
- Wireless heatmap with RF planner

### Configuration lifecycle

- Extensive Life cycle operations for device configuration change
- Create infrastructure wide, device software image update for baseline version management
- Configuration life cycle operations (backup & restore) with scheduling and remote reboot
- Optimal device firmware selection reducing IT involvement with scheduling automation

## Datasheet

[Alcatel-Lucent OmniVista Cirrus](#)



## Auto-Provisioning

- Automatically roll-out consistent provisioning policies and device configuration
- Allows off the-shelf OmniSwitches devices to be provisioned simply by connecting to the network
- Enforce Golden configuration and best practices by monitoring compliance and audit reporting

## Unified management

- Single pane of glass management for Alcatel-Lucent Omni Switch® and Stellar Access Points for wireless services provisioning and monitoring
- Centralized role based access policy with built-in authentication policy manager
- Advanced BYOD and guest access mobility features including configuration and monitoring (each Stellar Access Point comes bundled with 50 Guest Access and 50 BYOD licenses allowances)
- Integrated Captive Portal including Social Login Authentication (Facebook™, Google™, Rainbow™)

## Dashboard

- Graphical widgets for device status with drill-down capabilities
- Real-time monitoring and analysis of critical network performance indicators through visual widgets
- Full choice of displays, data and other important network and device information with advanced reporting capabilities
- WLAN focus widgets providing extensive view for live reporting on wireless operations (SSID, AP and Clients) and WiFi performances (throughput, band utilization and client health)
- IoT focus widgets helps to visualize real-time and historical graphical views of your endpoints

## Network Analytics

- Provides insight in the network health with advanced graphical analytics on most problematic switches based on device state (CPU, memory, temperature)
- Enables automatic generation of business centric, CIO-oriented graphical analytics reports for network

## IoT enablement

- IoT Inventory assisted with cloud-based Endpoints fingerprinting service gives a full spectrum visibility of all connected devices across the network with complete contextual information
- Contextual information of all connected devices including Key attributes such as device type, vendor, hardware version, network location and time information
- IoT Policy Enforcement with access role profiles automates network-wide access based on IoT classification
- Dashboard IoT with focus Endpoint analytics summary provide real-time and historical summary view of IoT activity for better informed analysis and reporting

## Application visibility

- Provides application analytics for network wide application inventory, monitoring and use, allowing a better understanding of bandwidth consumption between business critical and non- professional applications
- Allows centralized policy enforcement and application-use policy by applying QoS policy enforcement such as rate limiting, blocking and application prioritization
- Improves user experience and business outcome with embedded analytics engine, showing in depth application use reports and key measurement indicators

## Privacy and regulatory compliance

- OmniVista Cirrus hosted in regional data centers based on customer location
- Compliant with applicable data privacy, security and regulatory framework in US, EU and abroad
- Compliant with General Data Protection Regulation (GDPR)

## Technical specifications

### OmniVista Cirrus ready network devices

- Alcatel-Lucent OmniSwitch® 6350, OS6450 models with minimum release AOS 6.7.2R03 MR
- Alcatel-Lucent OmniSwitch® OS6465 models with minimum release AOS 8.5R2
- OmniSwitch 6560, OS6860, OS6860-E, OS6865, OS6900 models with minimum AOS release 8.4.1R03
- OmniSwitch 6860N models with minimum release AOS 8.7R1
- Stellar access points AP1101, AP1201, AP1201H, AP1221, AP1222, AP1231, AP1251 models with minimum AWOS release 3.0.7
- Stellar access points AP1201BG, AP1321, AP1322, AP1361, AP1362 models with minimum AWOS 4.0.0 release

### Minimum browser requirements

- Google Chrome minimum version 63, Mozilla Firefox minimum version 56
- Microsoft Edge Chromium

### Mobile apps

- For Device on-boarding and geo-location tagging
  - OmniVista Cirrus Assistant (iOS min 8.0 & Android min 4.2)
- For Template based Provisioning
  - OmniVista Assistant (Android up to version 10)

## Feature comparison

	Freemium	Paid subscription
Customer sign-on through portal	✓	✓
Number of devices supported	Limited to customer device inventory	Based on subscription terms
Duration of service	No limitation	Based on subscription duration (1, 3, 5 years)
Service and Support bundle included with subscription	Only Community Support	Different levels of Service and Support bundle available
Extended software support and device hardware maintenance (AVR)	—	Based on subscribed service and Support level bundle
Functionalities level	Customer device inventory One time device software update	Complete features No restrictions
Guided workflows and simplified network provisioning	—	✓
Advanced monitoring and topology services	—	✓
Unified management for LAN and WLAN	—	✓
Guest access with Captive Portal and BYOD	—	✓
Smart Analytics and reporting	—	✓
Application visibility Monitoring and enforcement	—	✓

## Ordering information

### OmniVista Cirrus is available with 3 different Service and Support bundles (Base, Business, Premium)

Base Bundle includes:

- OmniVista Cirrus Network Administration SaaS for all licensed devices
- Community support access

SKU	Description
OVC-AP-BAS-nY	OmniVista Cirrus – Cloud network administration for one Stellar Access Point model (covers OAW-AP1101, AP1201, AP1201H, AP1221, AP1222, AP1231, AP1232, AP1251, AP1321, AP1322, AP1361, AP1362 series) for the selected subscription duration (options are one, three or five years). Include Base Service and Support Bundle for the device under subscription.
OVC-ESS-BAS-nY	OmniVista Cirrus – Cloud network administration for one Essential OmniSwitch model (covers OS6350, OS6450, OS6465, OS6560, 6860N series) for the selected subscription duration (options are one, three or five years). Include Base Service and Support Bundle for the device under subscription.
OVC-ADV-BAS-nY	OmniVista Cirrus – Cloud network administration for one Advanced OmniSwitch model (covers OS6860, OS6860-E, OS6865 series) for the selected subscription duration (options are one, three or five years). Include Base Service and Support Bundle for the device under subscription.
OVC-CORE-BAS-nY	OmniVista Cirrus - Cloud network administration for one Core OmniSwitch model (covers OS6900 series) for the selected subscription duration (options are one, three or five years). Include Base Service and Support Bundle for the device under subscription.

Replace n with 1,3,5 for duration terms (1, 3, 5 years)



Business Bundle includes:

- OmniVista Cirrus Network Administration SaaS for all licensed devices
- ALE Business Partner Access to the Global Welcome center for OmniVista Cirrus SaaS Service and support
- Firmware update and upgrade for all licensed devices
- ALE Partner TAC Access for OmniVista Cirrus SaaS and node support assistance
- ALE Partner hardware service (AVR/Advanced replacement) and support for all licensed devices

SKU	Description
OVC-AP-BIZ-nY	OmniVista Cirrus - Cloud network administration for one Stellar Access Point model (covers OAW-AP1101, AP1201, AP1201H, AP1221, AP1222, AP1231, AP1232, AP1251 series, AP1321, AP1322, AP1361 and AP1362 series) for the selected subscription duration (options are one, three or five years). Include Business Service and Support Bundle for the device under subscription.
OVC-ESS-BIZ-nY	OmniVista Cirrus - Cloud network administration for one Essential OmniSwitch model (covers OS6350, OS6450, OS6465, OS6560 series) for the selected subscription duration (options are one, three or five years). Include Business Service and Support Bundle for the device under subscription.
OVC-ADV-BIZ-nY	OmniVista Cirrus - Cloud network administration for one Advanced OmniSwitch model (covers OS6860, OS6860-E, OS6865 series) for the selected subscription duration (options are one, three or five years). Include Base Service and Support Bundle for the device under subscription.
OVC-CORE-BIZ-nY	OmniVista Cirrus - Cloud network administration for one Core OmniSwitch model (covers OS6900 series) for the selected subscription duration (options are one, three or five years). Include Business Service and Support Bundle for the device under subscription.

Replace n with 1,3,5 for duration terms (1, 3, 5 years)

Premium Bundle includes:

- OmniVista Cirrus Network Administration SaaS for all licensed devices
- End Customer Access to the Global Welcome center for OmniVista Cirrus SaaS Service and support
- Firmware update and upgrade for all licensed devices
- End-user support access for OmniVista Cirrus SaaS and node support assistance
- End-user hardware service (AVR/Advanced replacement) and support for all licensed devices

SKU	Description
OVC-AP-nY	OmniVista Cirrus - Cloud network administration for one Stellar access point model (covers OAW-AP1101, AP1201, AP1201H, AP1221, AP1222, AP1231, AP1232, AP1251, AP1321, AP1322, AP1361, AP1362 series) for the selected subscription duration (options are one, three or five years). Include Premium Service and Support Bundle for the device under subscription.
OVC-ESSENT-nY	OmniVista Cirrus - Cloud network administration for one Essential OmniSwitch model (covers OS6350, OS6450, OS6465, OS6560, 6860N series) for the selected subscription duration (options are one, three or five years). Include Premium Service and Support Bundle for the device under subscription.
OVC-ADV-nY	OmniVista Cirrus - Cloud network administration for one Advanced OmniSwitch model (covers OS6860, OS6860-E, OS6865 series) for the selected subscription duration (options are one, three or five years). Include Premium Service and Support Bundle for the device under subscription.
OVC-CORE-nY	OmniVista Cirrus - Cloud network administration for one Core OmniSwitch model (covers OS6900 series) for the selected subscription duration (options are one, three or five years). Include Premium Service and Support Bundle for the device under subscription.

Replace n with 1,3,5 for duration terms (1, 3, 5 years)

Visit [ALE OmniVista Cirrus](#).